



REGISTRATION STATISTICS 2007/08

The following tables and graphs set out registration statistics for the financial year 2007/08 for the Pesticides Program.

Tables

The 25 application categories are aggregated into statutory* timeframe periods.

Preliminary assessment

Preliminary assessment is the correct legal term for what is more commonly known as 'screening'.

This table shows:

- applications in process from the previous year;
- applications received in 2007/08; and
- applications withdrawn or rejected during the screening process.

Outcome of application

This table shows the number of applications received for assessment and the number finalised during 2007/08.

Summary (Determination all applications)

This table shows a summary of all applications, at screening and evaluation, finalised during 2007/08. The table includes the average clock ON time (the time the APVMA has been evaluating the application) and the average elapsed time (the total time to finalise the application, i.e. time the APVMA evaluates the application, plus the time taken by the applicant to correct defects and supply the label for approval).

Graphs

The graphs are divided into timeframe periods for application categories. Each graph shows the number of applications that were finalised within 20% to 120% of the application statutory timeframe.

Note that if an application has been withdrawn during screening or is a modular application without a timeframe it will be counted in the 2 to 3 month application graph.

* The statutory timeframe for each application category is defined in Schedule 6 of the *Agricultural and Veterinary Chemicals Code Regulations 1995*.

Annual statistics for applications received and finalised Financial year 2007/08

Pesticides Program

PRELIMINARY ASSESSMENT				
	In process at start of year	Apps received	Withdrawn	Rejected
Class of application				
Modular (modules to be assigned) or TBA		138	44	
2 to 3 month		1184	206	
5 month		129	26	
6 to 8 month		83	1	
9 to 12 month			6	
13 to 15 month		9	1	
TOTALS:	1,206	1543	284	0

2 to 3 month = Cat 7, 8, 9, 12, 13, 14
 5 month = Cat 5, 6, 10, 14, 17, 18
 6 to 8 month = Cat 10, 11, 14, 16
 9 to 12 month = Cat 10, 14, 15
 13 to 15 month = Cat 1, 10

Cat 10 can be 5-15 months, most commonly 6-8 months
 Cat 14 can be 2-14 months, most commonly 5-7 months

Withdrawn = treated as withdrawn by the APVMA, or voluntary withdrawal by the applicant

OUTCOME OF APPLICATION									
	Granted	In timeframe	% in timeframe	Refused	In timeframe	% in timeframe	Withdrawn	In timeframe	% in timeframe
Class of application									
Modular (modules to be assigned) or TBA				-			-		
2 to 3 month	995	916	92%				20	15	75%
5 month	131	62	47%				5	4	80%
6 to 8 month	53	27	51%				2	1	50%
9 to 12 month	38	12	32%				3	2	67%
13 to 15 month	18	10	56%				-		-
TOTALS:	1235	1027	83%	0	0	-	30	22	73%

SUMMARY (Determination period)					
TOTAL finalised	Number in timeframe	% in timeframe	Av. clock On (months)	Av. elapsed time (months)	In process at end of year
0	0	-			
1015	931	92%	1.5	6.8	
136	66	49%	6.4	15.5	
55	28	51%	7.1	13.5	
41	14	34%	10.4	23.3	
18	10	56%	16.9	26.6	
1265	1049	82.9%			1,149

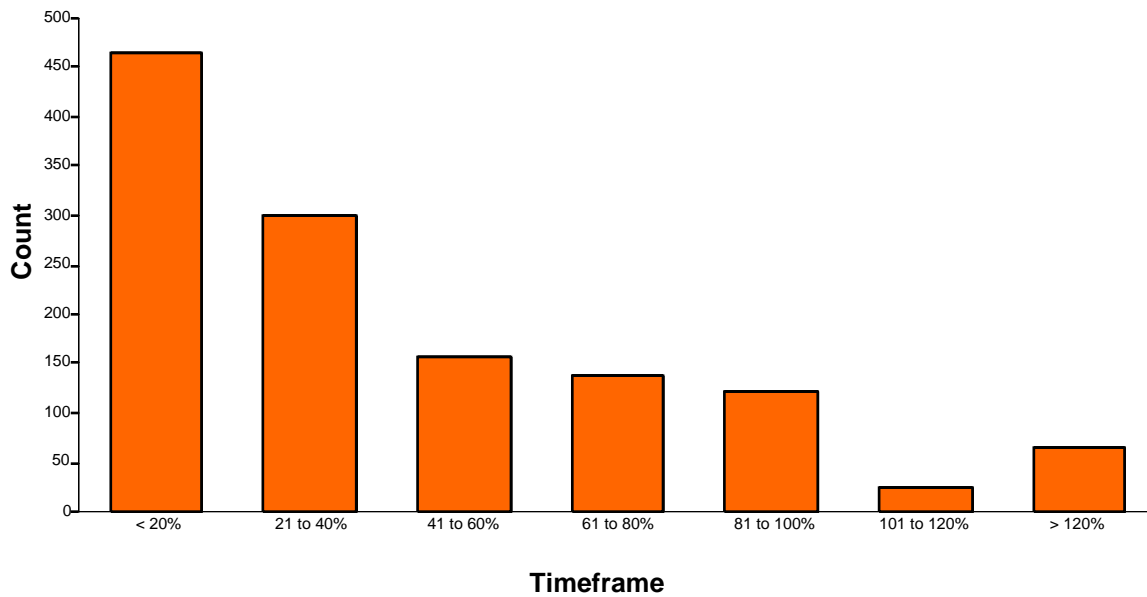


Finalised agricultural product applications

For the period: 01 Jul 2007 to 30 Jun 2008

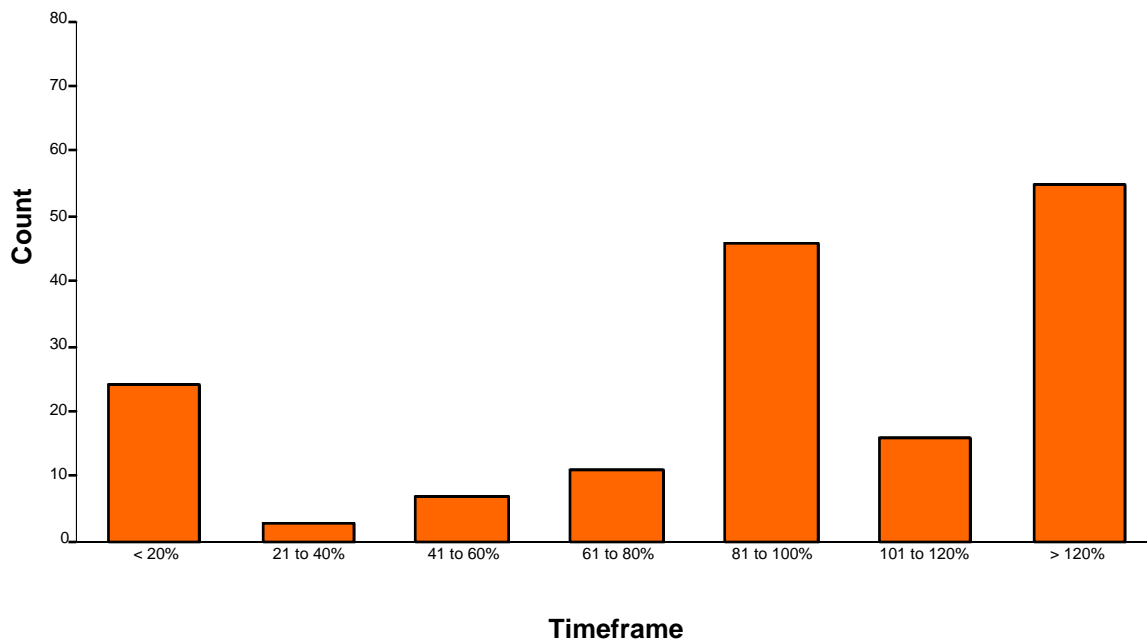
2 to 3 month applications

Total finalised: 1,265



5 month applications

Total finalised: 162



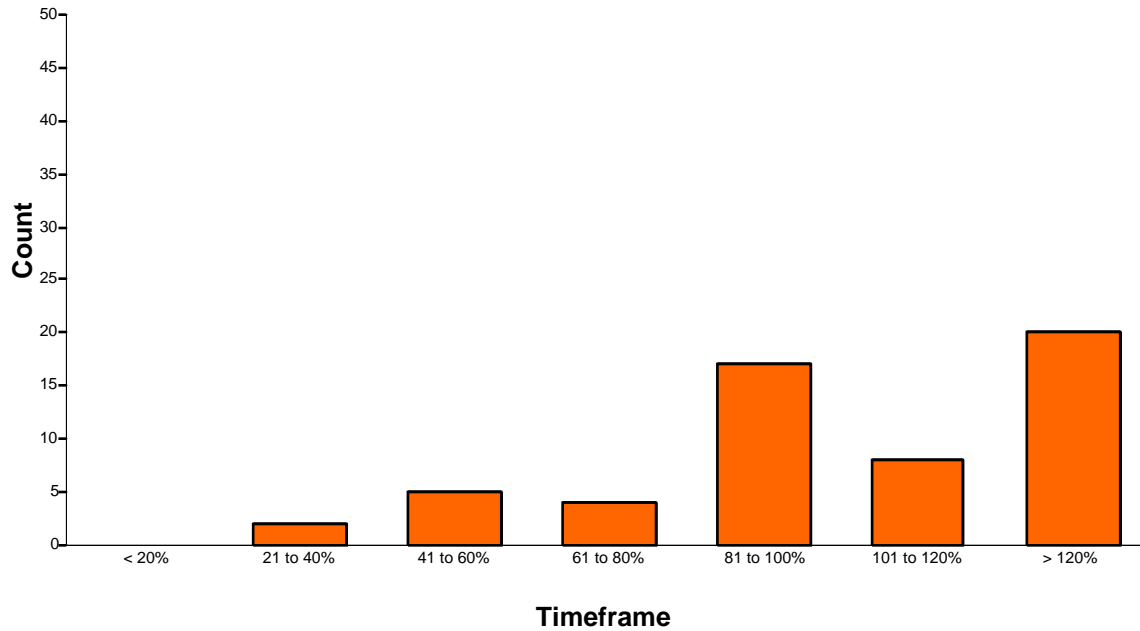


Finalised agricultural product applications

For the period: 01 Jul 2007 to 30 Jun 2008

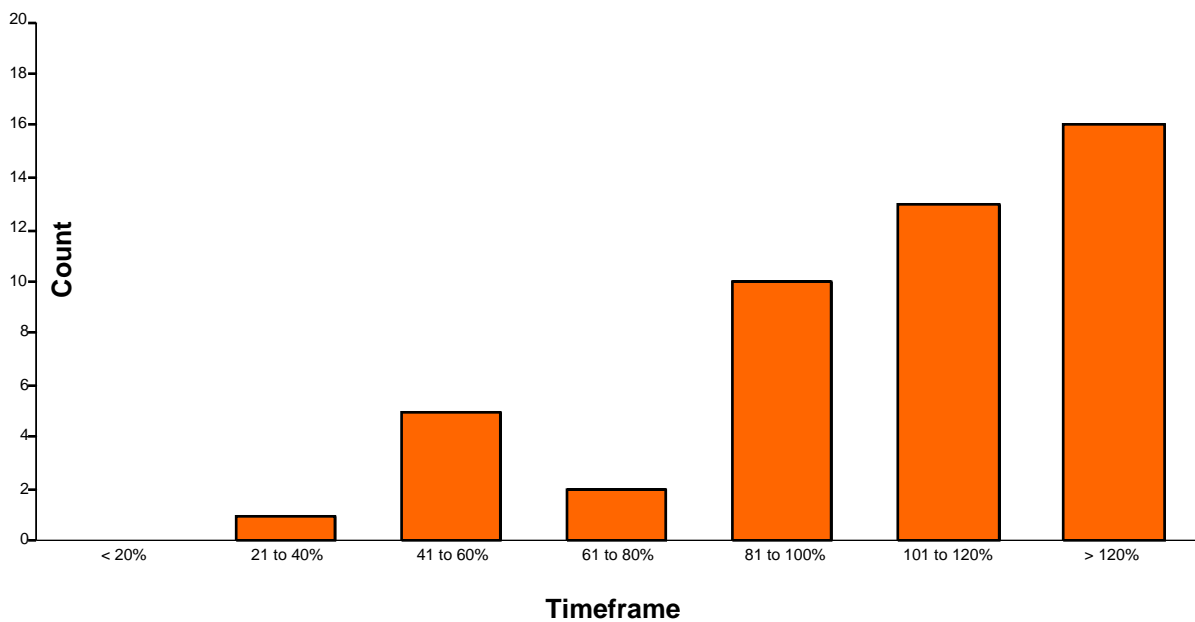
6 to 8 month applications

Total finalised: 56



9 to 12 month applications

Total finalised: 47





Finalised agricultural product applications

For the period: 01 Jul 2007 to 30 Jun 2008

13 to 15 month applications

Total finalised: 19

